

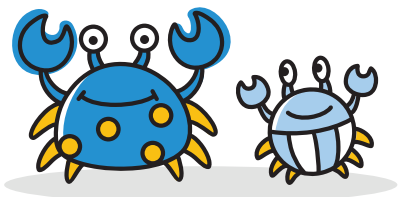
A NEW WAVE OF HOPE

Join Us in the Quest to Help Advance Treatment for Developmental and Epileptic Encephalopathies (DEE)

ABOUT THE DEEp OCEAN STUDY

The DEEp OCEAN clinical study is assessing the safety, efficacy, and tolerability of the investigational drug in the treatment of seizures in children and adults with DEE, a severe form of epilepsy that affects learning and development.

All study-related visits, tests, and medications will be provided at no cost. Where regulations allow, participants and caregivers will be fairly compensated for their travel, time, and effort for the duration of the clinical study.



WHY PARTICIPATE IN CLINICAL RESEARCH?

There's no guarantee that participants will get a health benefit from being in the study. You might have the opportunity to learn more about your loved one's condition and play a role in defining future treatment options for the DEE community. The decision to participate is completely voluntary and a personal choice.

Interested in Learning More?

Visit www.DEEpDEEstudy.com for more information about how to participate today!

For additional details please visit www.ClinicalTrials.gov using the study ID: NCT06719141

Qualified Participants:

- Have been diagnosed with a Developmental and Epileptic Encephalopathies (DEE), such as Lennox-Gastaut Syndrome (LGS) or other.
- Are between the ages of 2 and 65 years old.
- Have experienced seizure onset between:
 - Birth and 8 years old for people with LGS
 - Birth and 5 years old for people with DEE (other)
- Have an average of 4 seizures per month during the last 3 months.
- Are willing and able or have a caregiver who can maintain study diaries throughout the DEEp OCEAN study.

Additional study requirements to participate will apply. A study representative will discuss them with you.



SITE CONTACT INFORMATION: